

# CLAY COUNTY SHERIFF'S OFFICE

2021



# TABLE OF CONTENTS



Page 3 – Sheriff’s Message
Page 4 – Mission, Vision and Values
Page 5 – Organizational Structure
Page 6 – Command Staff
Page 8 – Staffing Breakdown
Page 9 – Human Resources
Page 10 – Administration Division
Page 14 – Community and Court Services Division
Page 24 – Detention Division
Page 27 – Emergency Management Division
Page 29 – Investigation Division
Page 34 – Law Enforcement Resource Center
Page 36 – Patrol Division
Page 41– Professional Standards Division
Page 44 – Community Impact

## From the Sheriff



**“ 2021 WAS A YEAR OF  
POSITIVE GROWTH  
AND CHANGE ”**

**WILL AKIN - SHERIFF**

I hope you find this first-ever annual report for the Clay County Sheriff’s Office both informative and interesting. It reflects the tremendous work the members of the Sheriff’s Office put in day in and day out and gives an in-depth look into the big changes that took place in 2021.

When I was running for Sheriff, I stated in my campaign that my priorities were:

- Collaborate with education partners on school safety and security
- Strong public safety partnerships
- Increase staffing levels to meet future needs
- Innovation and efficiency
- Accountability and transparency.

I hope you find all of those things reflected in this report. Beginning my first day in office on Jan. 1, 2021, we have worked toward these goals. From additional School Resource Deputies that allowed us to expand into elementary schools in the North Kansas City School District (pp. 20-21), to staffing growth (p. 9), to detailed statistics of what our staff members do, you’ll find it all here.

A report like this is important to show the community how we use their tax dollars and let them hold us accountable. It’s also a comprehensive view of most everything the Sheriff’s Office does, many of which are tasks that don’t make headlines but are vital to our County. These include units and divisions like Court Security, Transportation, Detention, and more.

We strived to present most statistics in this report as three-year comparisons, as 2019 was our last “normal” year before the COVID-19 pandemic. Regardless, you’ll see that 2021 was a year of positive growth and change for the Clay County, Missouri, Sheriff’s Office.



## **Mission Statement**

**Embrace Change ... Create Value ... Inspire Others ...**

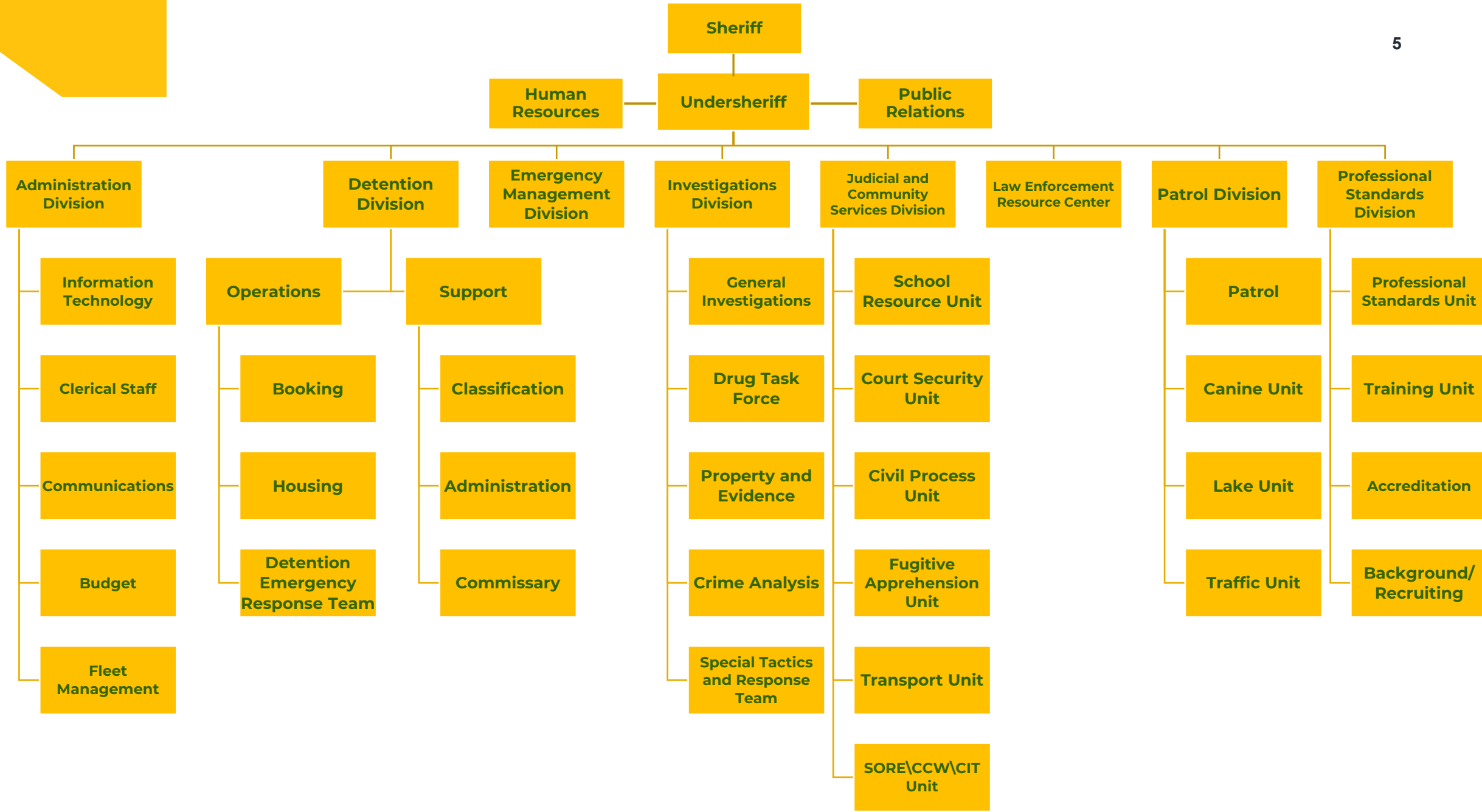
## **Vision Statement**

**Bring Sheriff's Office and community together while serving with integrity and transparency.**

## **What Guides Us**

**Respect, Accountability, Courage, Honesty, Integrity, and Service**

# Sheriff's Office Organization



## Division Commanders



Undersheriff Jeff Self



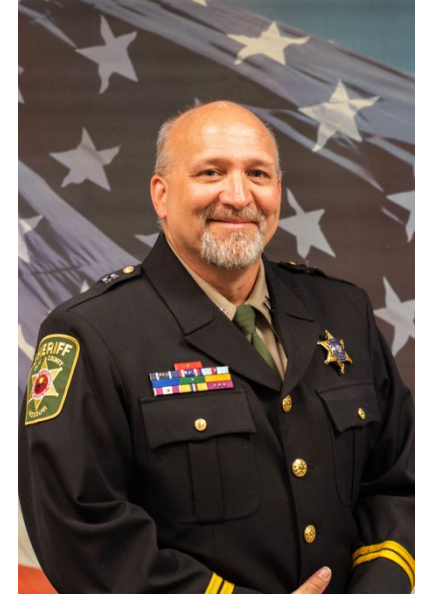
Captain Aimee Agderian  
Administration Division



Captain Phil Coffey  
Judicial and Community  
Services Division



Director Melissa Evans  
Emergency Management  
Division



Captain Ray Franks  
Detention Division

## Division Commanders



Captain Rob Hays  
Patrol Division



Captain Bryan Sapp  
Law Enforcement Resource  
Center



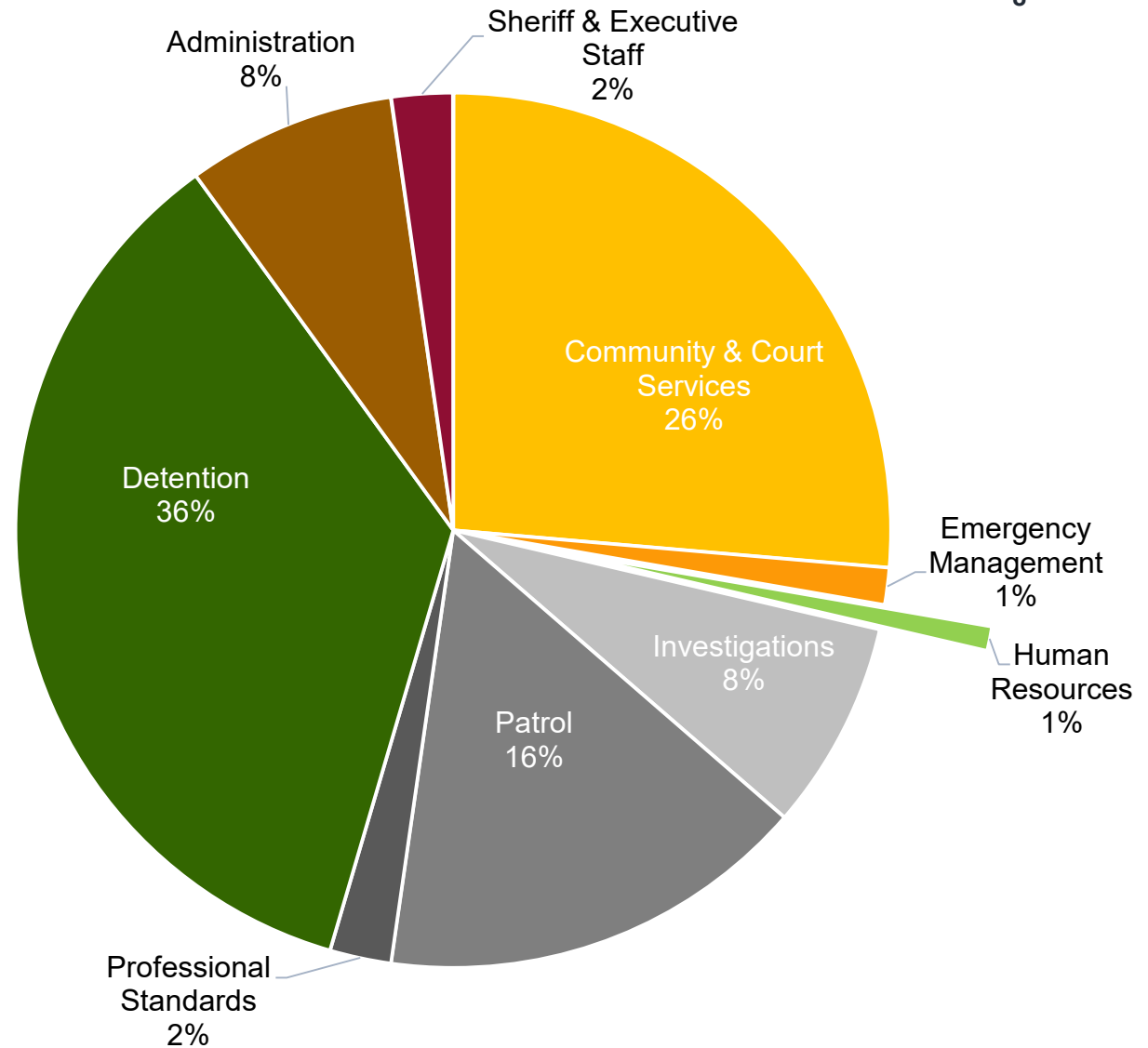
Captain John Teale  
Professional Standards Division



Captain Steve Wilhelm  
Investigations Division

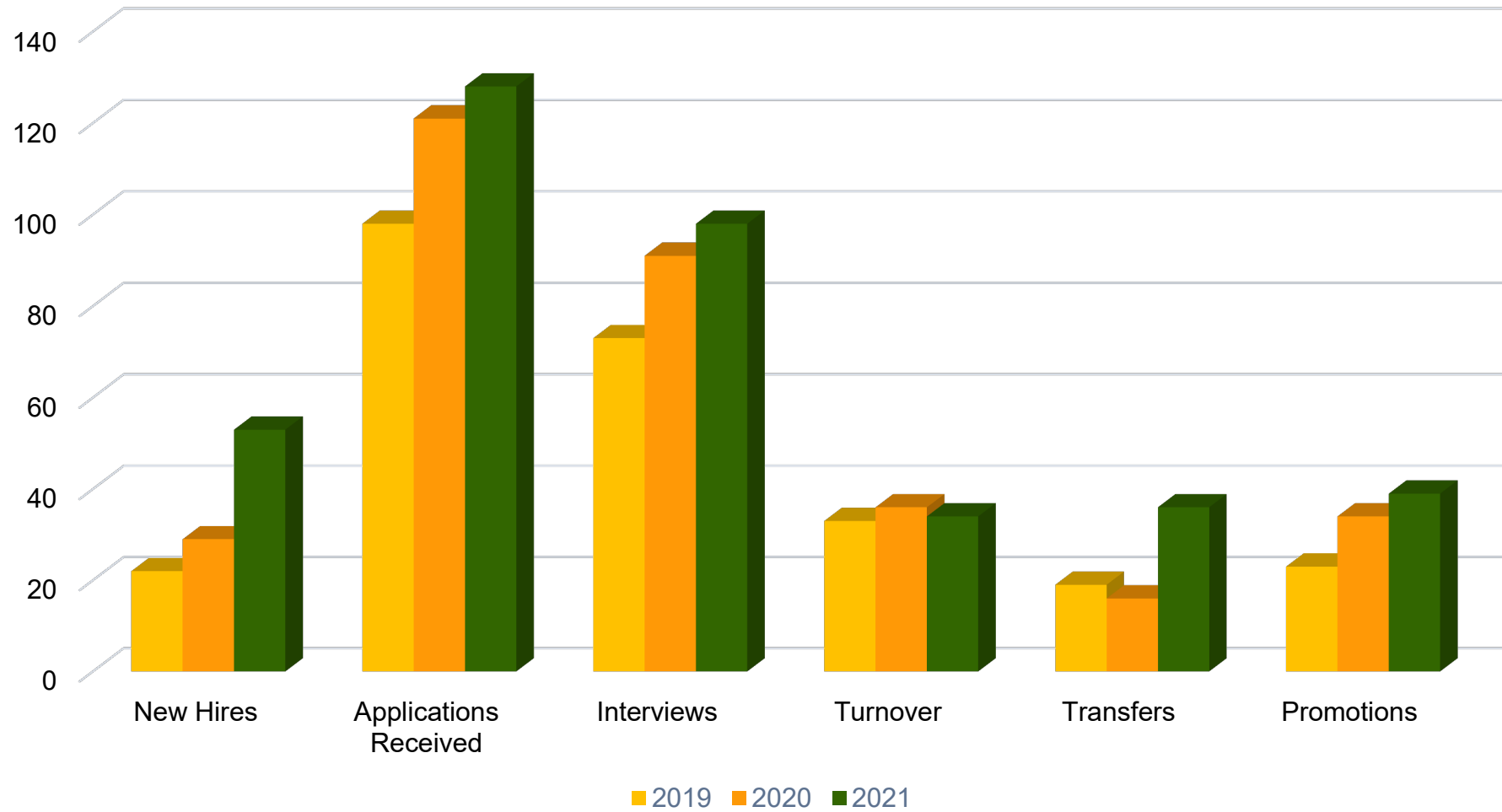
# STAFFING BREAKDOWN BY DIVISION

As of Dec. 31, 2021, the Clay County Sheriff's Office employed 220 people in nine divisions.





### Staffing Stats



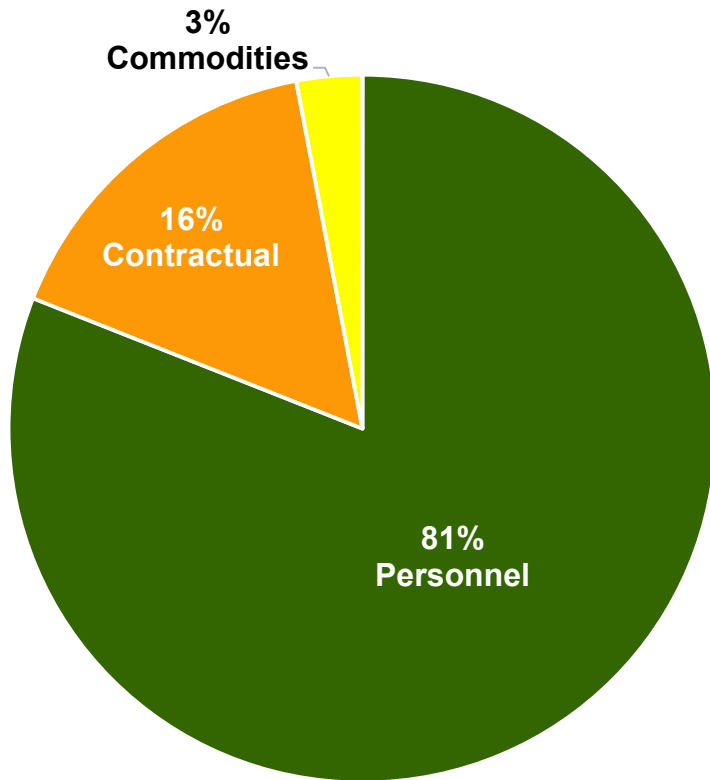


# ADMINISTRATION DIVISION

- Clerical Staff
- Communications Unit
- Information Technology
- Fleet Management
- Budget



**2021 Budget Allocation**

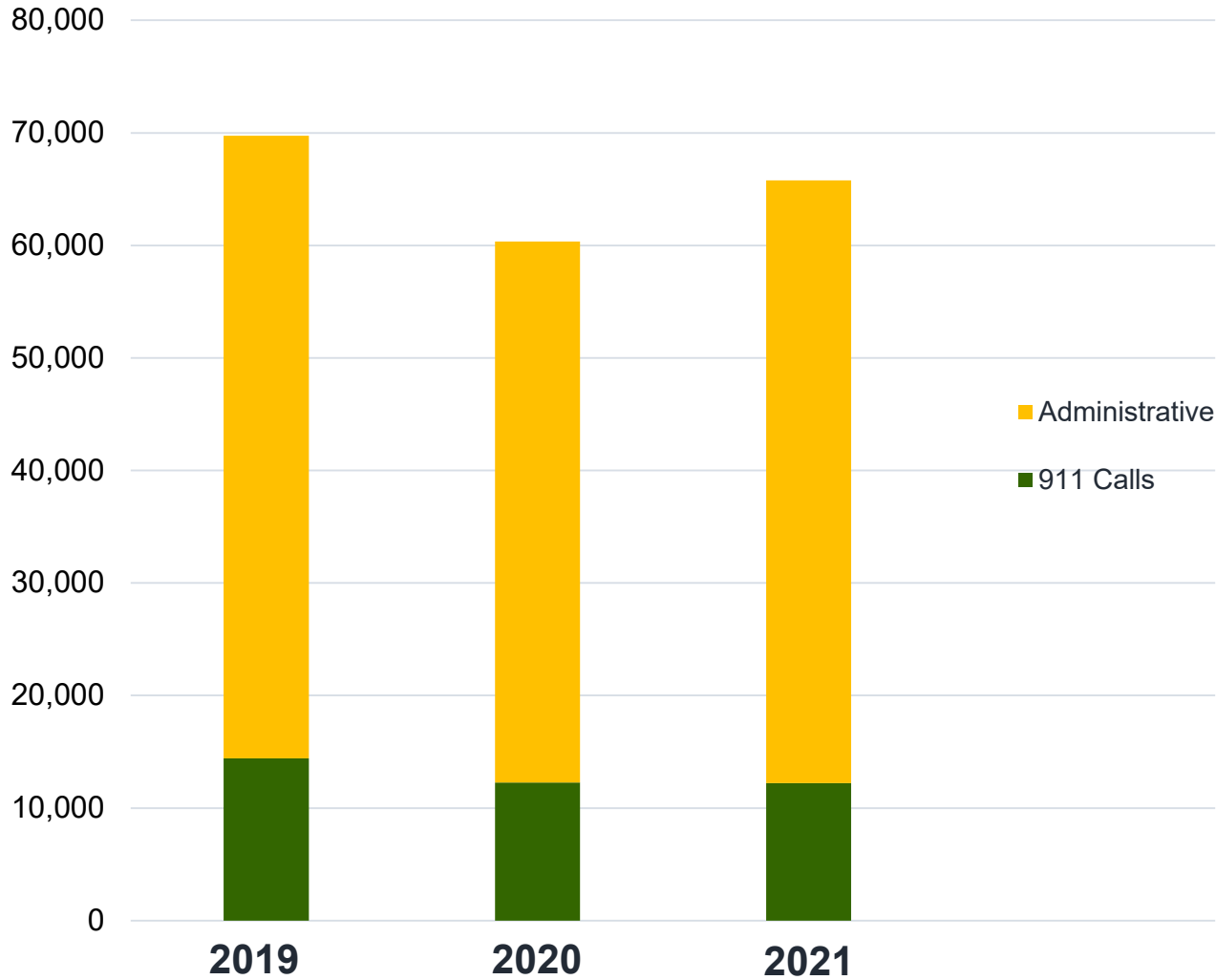


**Annual Budget**



# Communications Unit

### Calls Received in Communications Center



### Call Answering Wait Times



**8,302**

Warrants  
processed

**8,280**

Civil orders  
processed

**Clerical staff process all warrants and civil orders issued by  
Clay County Circuit Court.**

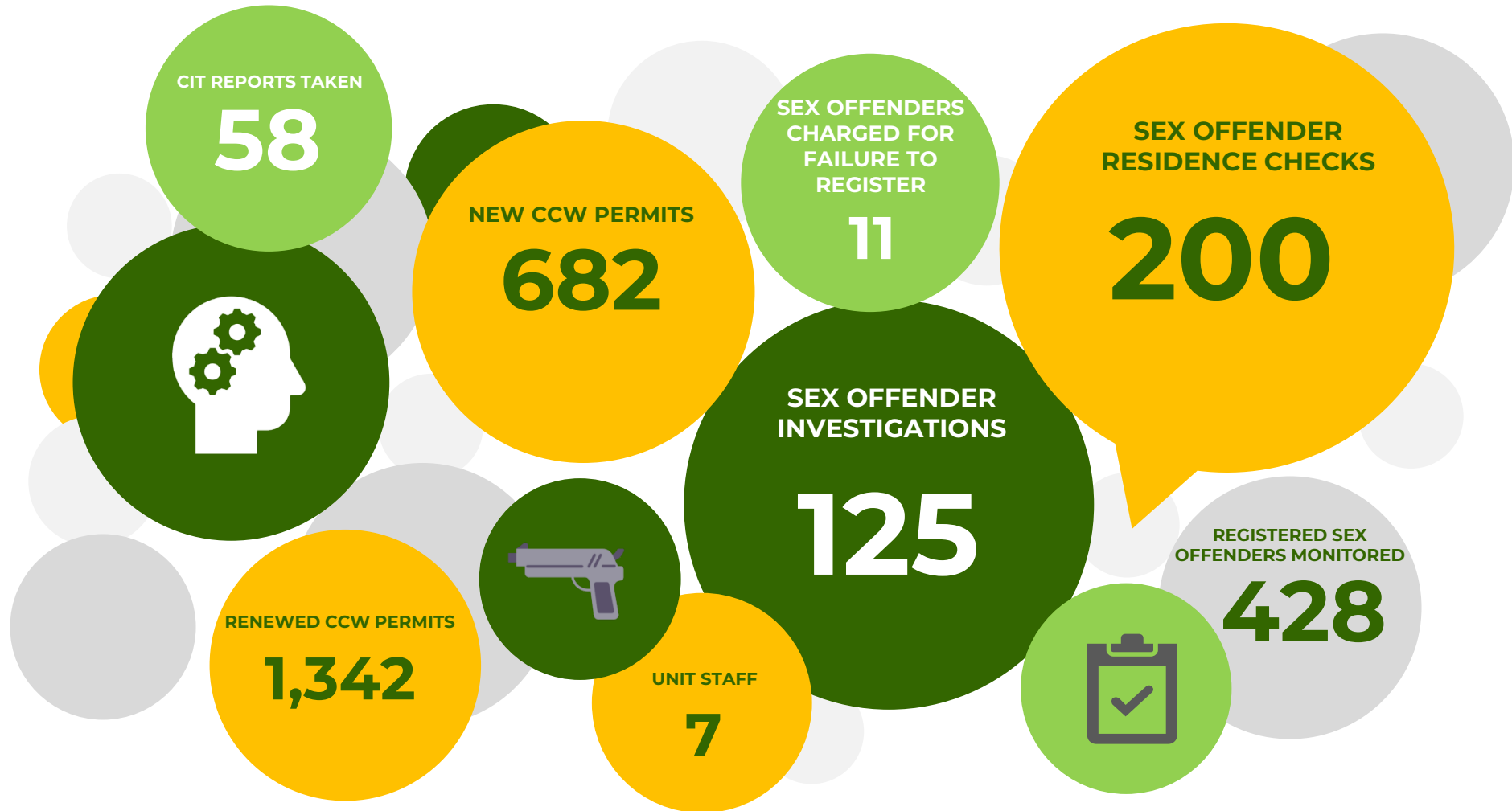


# COMMUNITY AND COURT SERVICES DIVISION



School Resource Unit  
Court Security Unit  
Civil Process Unit  
Sex Offender Registration and Enforcement  
Concealed Carry Weapons Registration  
Crisis Intervention Team Squad  
Fugitive Apprehension Unit  
Transport Unit

# Crisis Intervention Team (CIT), Sex Offender Registration and Enforcement (SORE), and Concealed Carry Weapons (CCW) Registration Unit



**5,840**

**Inmates  
transported to  
court**

**70,194**

**Total cases heard  
in court**

**The Court Security Unit provides security at the Clay County Circuit Court, and deputies serve as courtroom bailiffs.**



Type of Notice Served	2020	2021	2020 to 2021 change
Affidavit	67	54	-19%
Citation	3	9	200%
Child Protection Order	134	206	54%
Ex-Parte Full Order	340	377	11%
Standard Ex-Parte	417	550	32%
Execution	1	1	0%
Ex-Parte Local	879	1,013	15%
Ex-Parte Notice	373	511	37%
Ex-Parte Summons	110	75	-32%
Garnishment	1,659	2,014	21%
Levy	23	19	-17%
Motion to Modify Court Order	5	4	-20%
Notice of Court Hearing	50	71	42%

### Civil Service Definitions

**Affidavit –**

A written statement of facts voluntarily made. Usually to modify child support when a child comes of age.

**Ex-Parte –**

Orders for that can be granted without waiting for a response from the other side. Usually no-contact orders.

**Execution –**

The execution of a legal order not otherwise categorized herein.

**Garnishment –**

Served to employers to garnish the wages of an employee who has been court-ordered to pay a debt.

**Levy -**

The court-ordered seizure and sale of property to collect money for a debt.

## Civil Unit Continued

### Civil Service Definitions

Type of Notice Served	2020	2021	2020 to 2021 change
Nulla Bona	0	3	300%
Order, Misc.	33	21	-36%
Order to Show Cause	94	133	41%
Petition for Child Support	2	1	-50%
Probate	45	56	24%
Post Serve Mail	52	50	-4%
Replevin	24	10	-58%
Restitution	449	460	2%
Subpoena	128	157	23%
Summons	2276	2478	9%
Writ, Misc.	5	6	20%
<b>TOTAL</b>	<b>7,169</b>	<b>8,279</b>	<b>15%</b>

**Nulla Bona –**

A writ returned to indicate that no goods were obtained that can be used to satisfy a legal action for debt or damages.

**Probate –**

Orders from Probate Division, usually for guardianship or mental health treatment

**Post Serve Mail –**

A type of notice deputies can post at an address without making personal contact. A copy of the notice also is mailed to the address

**Replevin –**

An action to recover personal property that was unlawfully taken. Usually property purchased on a payment plan for which payments were not made.

**Restitution –**

Eviction

**Subpoena –**

An order to appear in court at a specified time and date after a court case has begun

**Summons –**

Similar to a subpoena – an order to appear in court – but at the beginning of a court case.

**Writ –**

A court order commanding the recipient to perform or cease a specified act.

## Fugitive Unit

Activity Type	2019	2020	2021*
Warrant Cleared by Arrest	220	180	148
Warrant Cleared by Outside Agency Arrest	1,028	914	939
Warrant Cleared by Out-of-State Arrest	219	236	241
Extraditions: KC Metro	146	28	27
Extraditions: Missouri	162	145	137
Extraditions: Out-of-State	228	174	205
Private Transport Service	0	26	26

\* Due to staffing shortages, 2021 data is missing from August to October.

# SCHOOL RESOURCE UNIT



The School Resource Unit grew substantially in 2021 with the addition of five deputies funded by the Clay County Children's Fund. This allowed deputies to expand their presence into elementary schools in the North Kansas City School District and develop new and innovative programming.

## School Resource Unit Accomplishments

### 01 Mentoring

Developed a kindergarten through fourth-grade educational and mentoring program for at-risk students

### 02 Choices

Updated and upgraded the fifth-grade Choices program to help students make smart choices and developed a similar program for sixth-graders

### 03 Academy

Created and taught a summer Junior Police Academy for middle school students.

### 04 Career Path

Expanded the Law Enforcement Career Path program into all four North Kansas City high schools

### 05 Trek

School Resource Deputies Bear McCulley and Jiree Police hiked more than 200 miles on the Katy Trail to raise money for the Law Enforcement Career Path program.

### 06 Staff

Added four deputies, two corporals and a dedicated lieutenant to oversee the Unit.

**83**

Criminal reports taken by  
School Resource Deputies

**532**

School incident reports taken

**17**

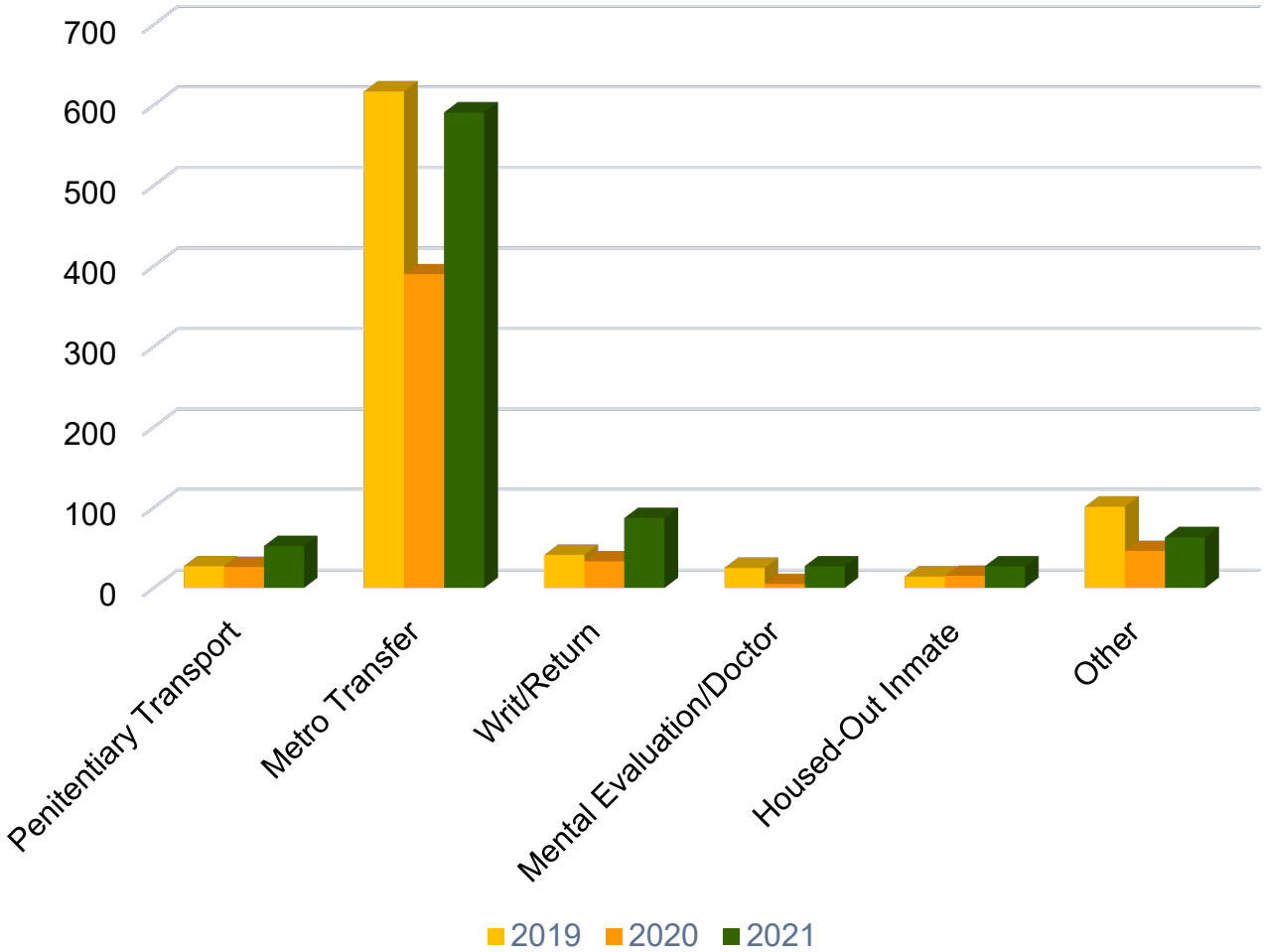
Number of School Resources deputies,  
an increase of five deputies from 2020.

**32**

Elementary, sixth grade center,  
middle, and high schools in the  
North Kansas City School  
District served by School  
Resource Deputies.

# Transportation Unit

## Unit Transports



The Transportation Unit is responsible for all inmate movement. They ensure inmates are where they need to be, when they need to be.

Penitentiary Transport – Transportation to and from state prisons

Metro Transfers - Local transfers, including adjoining counties

Writ/Return – State Department of Correction inmates picked up and returned on a court-ordered writ to appear in person in Clay County Court.

Mental Evaluation – Generally transported to St. Joseph or Kansas City per court order for an evaluation.

Doctor Appointment – Scheduled by jail medical staff to an outside area medical facility

Housed-Out Inmate – Transporting inmates that are housed out at local facilities per the Detention Center’s requests. The Transportation Unit provided for initial housing plus court returns.

CLAY COUNTY DETENTION CENTER 24

**DETENTION  
DIVISION**





# Detention MAKES BIG CHANGES

The largest division in the Sheriff's Office underwent major changes in staffing and upgraded facilities in 2021. An all-new command staff took over, and more than 20 employees transferred out of Detention to other assignments, with new staff taking their place.

The Division remodeled the Detention Center kitchen, administrative and supervisory offices.

All this happened amid the COVID-19 pandemic, causing numerous changes in procedure to protect inmates' health, to include quarantining, program cancellation, and vaccine clinics.



**4,126**

**Inmates booked**

**4,083**

**Inmates released**

**429**

**Internal Detention incident reports, 19 of which were assaults on staff. Two resulted in criminal investigations.**

**12**

**New 12-hour shifts in Detention resulted in all staff getting regularly scheduled weekends off.**



27



**Make a Plan.  
Have a Kit.  
Stay Informed.**

Disaster Aware • Disaster Prepared

# EMERGENCY MANAGEMENT DIVISION



# Accomplishments

## 01 Pandemic

Created standard operating procedures for each division for the COVID-19 pandemic and future needs

## 02 Vaccines

- Helped with initial planning for mass community vaccination site
- Coordinated Detention vaccination clinic with community partners

## 03 Community

Delivered numerous community presentations virtually and in-person on preparedness and safety

## 04 Plan

Reviewed and updated the 540-page Local Emergency Operation Plan, turning it into a digital document

## 05 Internships

Implemented an internship program. Three people have gone through the program so far.

## 06 Siren

Installed and activated a new outdoor warning siren near Holmes Creek subdivision



# INVESTIGATION DIVISION

General Investigations

Drug Task Force

Property and Evidence

Crime Analysis

Special Tactics and Response Team



## Negotiators + STAR Team

The Hostage Negotiation Team trained alongside the Special Tactics And Response (STAR) Team for the first time in October.



## Never Forget

The STAR Team climbed 110 flights of stairs to commemorate the 20<sup>th</sup> anniversary of the Sept. 11, 2001, attack on the World Trade Center.



## Drug Money Recovered

In just his first nine months with the Clay County Sheriff's Office, K9 Csibi – working with his partner Detective Andrew Ignatenko on a federal drug task force – found more than \$1 million cash in illegal narcotics proceeds.

## Reported Incidents Continued

Incident Type	2019	2020	2021	2019 to 2021 change	2020 to 2021 change
Larceny	96	87	108	13%	24%
Missing Person/Runaway	13	9	17	31%	89%
Motor Vehicle Theft	31	41	37	19%	-10%
Murder	0	0	2	200%	200%
Possession of Controlled Substance	220	122	213	-3%	75%
Possession of Dangerous Drugs	234	179	186	-21%	4%
Pursuit	53	59	101	91%	71%
Recovered Property	85	147	131	54%	-11%
Resist Arrest	23	6	22	-4%	267%
Robbery	1	3	3	200%	0%
Sex Offense	11	22	25	127%	14%
STAR Team Deployment	0	0	6	600%	600%

## Reported Incidents Continued

Incident Type	2019	2020	2021	2019 to 2021 change	2020 to 2021 % change
Threats	3	2	4	33%	100%
Towed Vehicle	80	54	73	-9%	35%
Trespassing	18	9	4	-78%	-56%
Vandalism	50	42	54	8%	59%
Weapon Violation	25	12	11	-56%	-8%
Other	328	259	393	20%	52%
<b>TOTAL</b>	<b>2,037</b>	<b>1,650</b>	<b>2,114</b>	<b>4%</b>	<b>28%</b>



## Case Report Status

Status	2019	2020	2021	2019 to 2021 change	2020 to 2021 change
Closed by Arrest	462	348	406	-12%	17%
Charges Filed, Pending Arrest	15	18	15	0%	-17%
Closed	46	21	66	43%	214%
Exceptional Clearance	7	5	3	-57%	-40%
Inactive	205	226	162	-21%	-28%
No Crime Committed	715	507	551	-23%	9%
Prosecutor Declined	59	37	22	-63%	-41%
Victim Declined Prosecution	116	101	73	-37%	-28%
Open	95	162	466	391%	188%
Referred to Drug Task Force	114	56	55	-52%	-2%
Referred to Juvenile Court	124	52	92	-26%	77%
Referred to Other Agency	79	116	203	157%	75%
Held in Abeyance	0	1	0	0%	-100%
<b>TOTAL</b>	2,037	1,650	2,114	4%	28%



**LAW  
ENFORCEMENT  
RESOURCE  
CENTER**



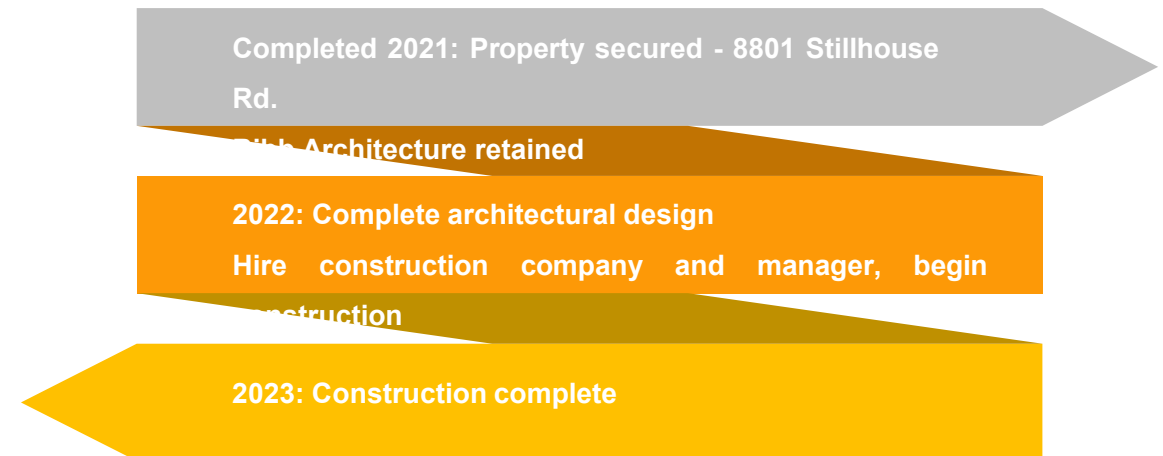
# LERC PROJECT STARTS

The creation of a Law Enforcement Resource Center (LERC) began in earnest in 2021. Sheriff Akin promoted Bryan Sapp to a new captain position to manage the project. It will be a multi-faceted training center including a covered firing range, classroom space for up to 50 people, a decision-based training area, tactical house and defensive tactics training room.

Capt. Sapp was able to secure 65 acres for just a \$1,000 lease for the next 30 years from Republic Services. The site – atop a reclaimed landfill that closed to dumping in 1983 – is just north of Missouri City on Stillhouse Road.

The goal is to make the LERC a resource to law enforcement agencies around the region that want top-notch training for their members.

## Project Timeline



# PATROL DIVISION



Patrol

K9 Unit

Traffic Safety Unit

Lake Unit

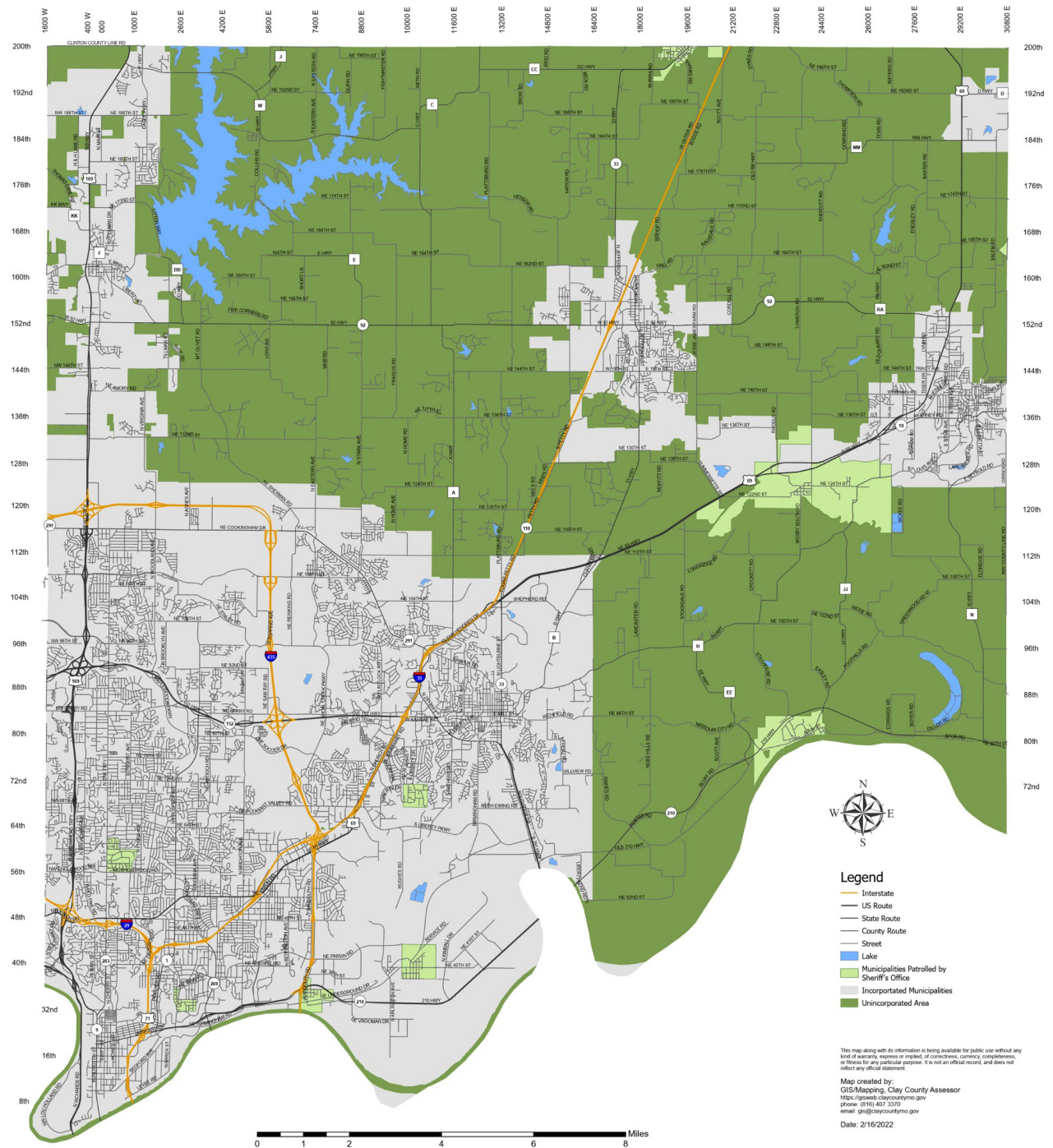


# PATROL AREA

Clay County Sheriff's Office patrol deputies police unincorporated areas of the County (in dark green). They also patrol several small municipalities (in light green), including:

Avondale  
Birmingham  
Excelsior Estates  
Glenaire  
Holt  
Missouri City  
Mosby

Oakwood  
Oakwood Park  
Prathersville  
Randolph  
Village of Oaks



This map along with its information is being available for public use without any kind of warranty, express or implied, of correctness, currency, completeness, or fitness for any particular purpose. It is not an official record, and does not reflect any official statement.

Map created by:  
GIS/Mapping, Clay County Assessor  
<https://gisweb.claycountymo.gov>  
phone: 6510 407 1310  
email: [gis@claycountymo.gov](mailto:gis@claycountymo.gov)

Date: 2/16/2022

# Lake Unit BEGINS

On March 1, the Sheriff's Office absorbed Park Rangers from the Clay County Parks Department. These new deputies became members of the Clay County Sheriff's Office's new Lake Unit. They patrol all County parks, especially at Smithville Lake. Most of their duties remain the same, but now they can assist with law enforcement County-wide.

In 2021, they assisted with two drowning recoveries and a boating accident with many people seriously hurt.

# Traffic Safety ENHANCED

The Missouri Department of Transportation awarded the Sheriff's Office a grant to pay for two full-time deputies and vehicles to enforce drunk driving laws. A sergeant who focuses on traffic enforcement, crashes and complaints also is part of this new Traffic Safety Unit. Its goal is to generate voluntary compliance through high-visibility traffic enforcement to reduce the number of crashes in Clay County.

The Unit started October 1. In just three months' time, they made 203 traffic stops, 39 DWI arrests and issued 272 citations.

# K9 Unit EXPANDS

The Canine Unit grew by another dog in 2021 to a total of three. K9 Kratos was purchased with funds raised from a very successful golf tournament in August. Many Sheriff's Office staff and Citizens Academy Alumni worked to host the tournament. Kratos was Sgt. Ty Edwards' partner. Firehouse Subs also awarded the Sheriff's Office a grant for the purchase of another dog in 2022.

In 2021, canines were deployed 122 times for investigation purposes for deputies or outside agencies.



## Patrol Division Activity

Activity Type	2019	2020	2021	2019 to 2021 change	2020 to 2021 change
911 Call Response	No data available	2,353	2,638	n/a	12%
Accident Response	624	744	634	2%	-15%
Area Presence	1,085	1,007	5,099*	370%*	406%*
Subdivision Check	11,226	11,620	11,950	6%	3%
Driving While Intoxicated Arrests	5	90	103	1,960%	14%
Traffic Stop	5,764	5,213	7,402	28%	42%
Incident Reports Taken	2,070	1,682	2,157	4%	28%
Citations, Non-Traffic	3,047	2,426	2,947	-3%	21%
Traffic Citations	518	441	640	24%	45%

\* The classification criteria for an area presence changed in 2021, resulting in a much higher total.





# PROFESSIONAL STANDARDS DIVISION



Professional Standards Unit  
Training Unit  
Background/Recruiting  
Accreditation

#1 Procrastinator  
• Supervisors  
constantly  
now come  
completing  
time.  
• You have  
12-hour shifts  
than 30% of

# Accomplishments

## 01 Accreditation

Began the process for accreditation through CALEA, the Commission on Accreditation for Law Enforcement Agencies

## 02 Coordinator

Devoted a full-time sergeant to meet employees' training needs

## 03 Training

Coordinated nearly 75 classes for personnel on topics ranging from use of force decision-making to domestic violence cases

## 04 Recruitment

Returned to on-site recruitment events amid COVID-19 pandemic

## 05 Regional

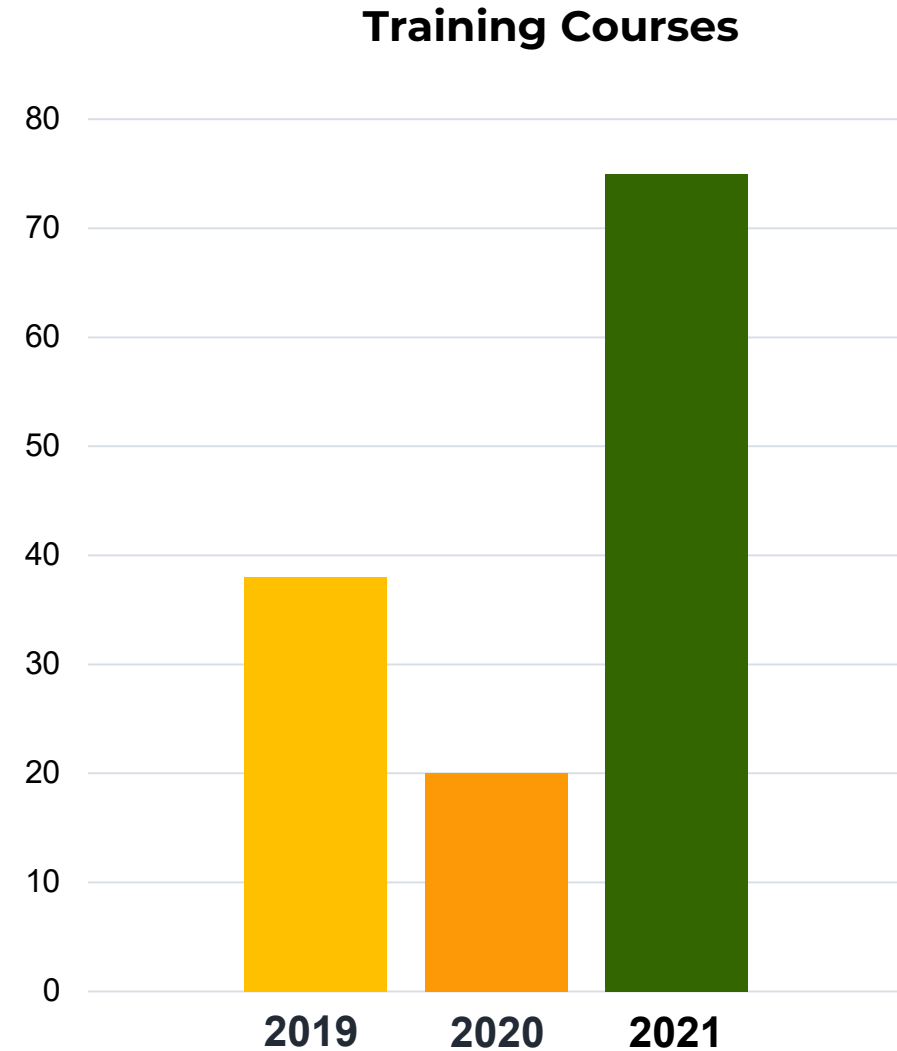
Hosted training for other area law enforcement agencies and served as the Missouri Sheriff's Association's regional training location

## 06 Investigations

Professional Standards Investigations improved case management and met demands of new laws.

# Training Unit RAMPS UP

After a significant decline in training availability in 2020 due to the COVID-19 pandemic, 2021 brought training back to the forefront. About twice as many courses were offered compared even to pre-pandemic levels in 2019. This was to ensure Sheriff's Office members had the most updated training available. Some of the many topics included tactical vehicle intervention, standard field sobriety tests, domestic violence, use of force decision-making, leadership, child passenger safety and more.





# COMMUNITY IMPACT

---

**The Clay County Sheriff's Office expanded its community outreach efforts like never before in 2021 to embrace its mission statement: Bring Sheriff's Office and community together while serving with integrity and transparency.**

**Sheriff Akin created a new public relations manager position to spearhead these outreach efforts, as well as manage social media and media relations. Large community events included the biggest-ever National Night Out event Aug. 3, the inaugural Trunk-or-Treat on Oct. 23, and a Community Drug Education Summit on Dec. 6 to warn about the influx of deadly counterfeit pills containing fentanyl.**

**The Citizens Academy resumed after a 1.5-year pandemic break, and the Citizens Academy Alumni Association gained their official 501c3 non-profit status while assisting with numerous Sheriff's Office endeavours.**

**Shop with a Sheriff gave 40 deserving children the chance to get fantastic Christmas presents and a holiday meal for themselves and their families.**

# Community Events



From Left: National Night Out; Trunk or Treat; Sergeant Steve Copp as Grand Marshal of the Liberty Fall Festival Parade; Shop with a Sheriff; and National Walk to School Day

# Sales tax RENEWED

Voters emphatically supported the permanent extension of the 1/8<sup>th</sup>-cent law enforcement sales tax in the Nov. 2 election.

Although the turnout was less than 6%, of the 10,226 people who did vote, 77.4% voted yes to renew the tax. For most Clay County residents, the tax was the only item on the ballot.

The sales tax had been in place since 1998 and went to voters for renewal every 12 years. The November election removed the tax's sunset provision.

The funds it generated comprised one-fourth of the Sheriff's Office's 2021 budget.

# LAW ENFORCEMENT

## SALES TAX RENEWAL

### WHAT IS ON THE BALLOT?

An extension of the 1/8<sup>th</sup>-cent sales tax that has been in place since 1998 to support the Clay County Sheriff's Office, and removing the tax's sunset. This is not a new tax.

### WHAT DOES THE TAX FUND?

Approximately 25% of the Clay County Sheriff's Office's operating budget

### HOW MUCH DOES IT COST?

1/8<sup>th</sup> cent for every dollar spent.  
On a \$20 purchase, this would be 2.5 cents.



### WHY IS THE SUNSET BEING REMOVED?

The Clay County Commission chose to remove

## ELECTION NOV. 2,

# CITIZENS ACADEMY

After canceling for the COVID-19 pandemic in March 2020, the Citizens Academy finally was able to resume in the fall of 2021. Eleven residents graduated from the Academy on Nov. 16 after spending 10 weeks learning about all aspects of the Sheriff's Office from dozens of Sheriff's Office staff members.

The Citizens Academy Alumni Association proved to be a tremendous asset in 2021, campaigning for the renewal of the law enforcement sales tax and volunteering at community and fund-raising events, including parades and the K9 Golf Tournament.



Clay County Sheriff's Office  
12 S. Water St.  
Liberty, MO 64068  
816-407-3700  
Claymosheriff.org

**Security Notice**  
By Order of the  
Clay County Sheriff  
Concealed firearms are  
prohibited in this building.  
Penalty for authorized Law Enforcement Personnel:  
Revised Statutes of Missouri, §38.65, 374, 375  
**NO  
SKATE BOARDING**

The 2021 Annual Report was produced by  
Public Relations Manager Sarah Boyd